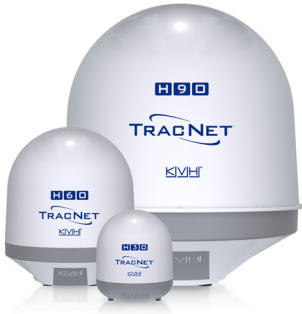




# TracNet™ H-Series with Hub+ BDU

## Quick Start Guide



This guide provides basic operation information for a TracNet system equipped with an AC-powered Hub+ Below Deck Unit (BDU). For complete operation, setup, and diagnostics information, refer to the comprehensive Help, available on the Support tab of the system's web interface or in KVH Manager.

### KVH Technical Support

Phone: 1 866 701-7103 (Within Continental U.S.A.)

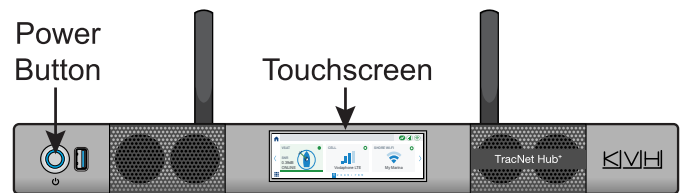
Phone: +1 401 851-3806 (Worldwide)

Email: mvbsupport@kvh.com

## How to Turn On the System

Press the power button on the front of the TracNet Hub+, which supplies power to the antenna. Wait a few minutes for initialization. The touchscreen displays status information.

*The antenna requires a clear view of the sky. Objects such as bridges and boat masts can block satellite signals.*



## How to Make a Voice Call (VSAT VoIP)

### FROM the Vessel

How you dial depends on your Line 1 phone number.

#### To call outside Line 1's country, dial:

<Int'l Prefix>+<Country>+<Area>+<Phone No.>

#### To call within Line 1's country, dial:

<Area>+<Phone No.>

#### To call inside Line 1's country/area code:

<Phone No.>

*Int'l Prefix = International call prefix from Line 1's country*

### TO the Vessel

People on shore call your vessel by dialing your vessel's phone number. If they call within the same country code as the vessel's phone number, they may avoid international charges. If they call from within the same area code, they may avoid long-distance fees.

For a fee, you can choose the country code and area code of your vessel's phone number(s). You can also add "virtual numbers." For details, email [airtimeservices@kvh.com](mailto:airtimeservices@kvh.com).

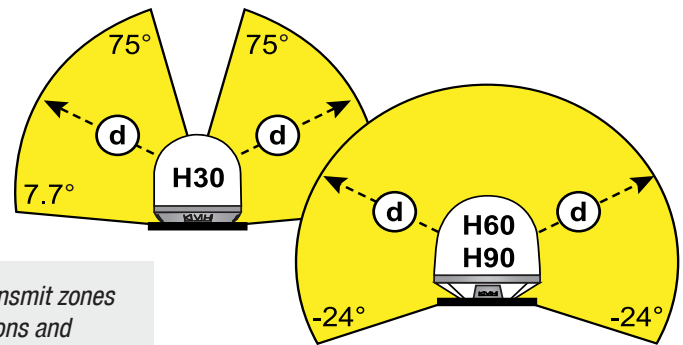
## Caution - RF Radiation Hazard



The antenna transmits radio frequency (RF) energy that is potentially harmful. Whenever the system is in use, make sure everyone stays the minimum safe distance away from the antenna. No hazard exists directly below the antenna.

Antenna Model	Min. Distance (d)
H30	32 feet (10 m)
H60	47.3 feet (14.4 m)
H90	60.4 feet (18.4 m)

*You can set up no-transmit zones to prevent transmissions and protect people in accessible areas. Refer to the Help for details.*



## How to Access the Web Interface

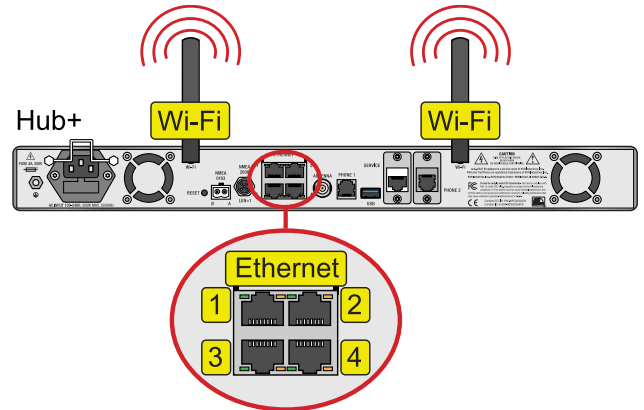
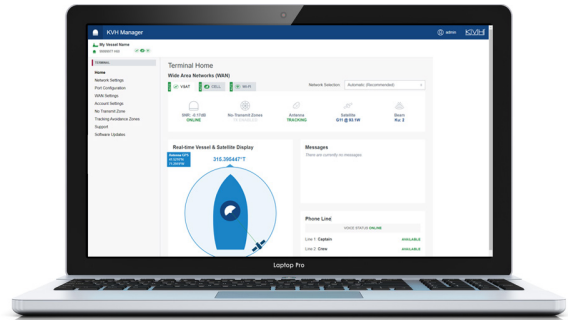
At the local web interface, you can check system status, switch operating modes, update software, and configure all aspects of the system from your mobile device or laptop.

1. Connect your device directly to an Ethernet port on the back of the Hub+, to its built-in Wi-Fi, or to a vessel network that is connected to the Hub+.

*Default Hub+ built-in Wi-Fi settings:*

*Network name (SSID): **KVHVSAT**<last 3 digits of Hub+ serial no.>  
 Password: **Full 9-digit Hub+ serial no.***

2. Enter **https://kvhonboard.com** in your web browser or KVH Connect Apple® iOS or Android™ app. *You can also enter the IP address (default for port 1 is https://192.168.5.1; you might need to bypass a warning).*
3. At the login screen, enter the admin or guest password. *If the setup wizard appears, you will first need to step through it to set passwords and system preferences.*

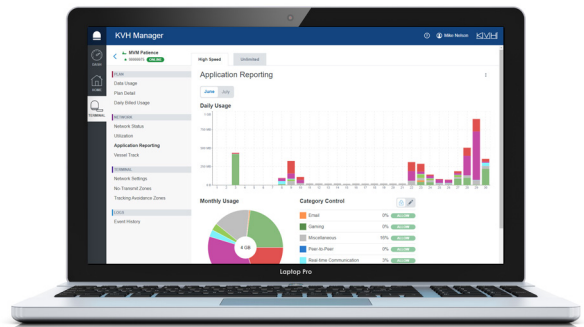


## How to Access KVH Manager

To access KVH Manager from anywhere over the Internet, go to **mykvh.com**, log in, and select “KVH Manager.”

**IMPORTANT!** If you do not purchase airtime directly from KVH, contact your Service Provider for details on accessing KVH Manager.

In addition to offering all the same settings available in the local web interface, KVH Manager allows you to monitor data usage, set up alerts, restrict certain categories of VSAT usage, and view your vessel’s track and position on a map.



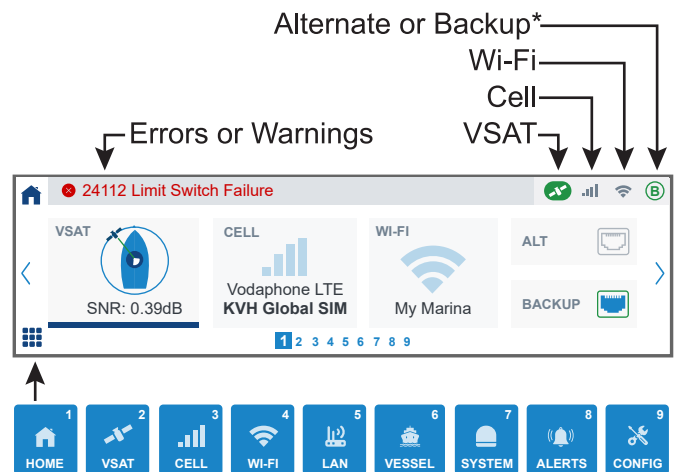
## How to Use the Touchscreen

The Hub+ touchscreen displays general status information. Tap the arrows or swipe left/right to scroll through the pages, or go directly to a page from the menu. The header shows any errors or warnings, as well as WAN status icons:

State	Connection Status
	Currently in use
	Available
	Not available
	Manually selected

*By default, the system automatically switches to the best available WAN connection. You can also manually switch. Refer to the Help for details.*

At the Config page, you can adjust touchscreen brightness. You can also reset the system to factory default settings.



Main Menu

\* if connected to your system