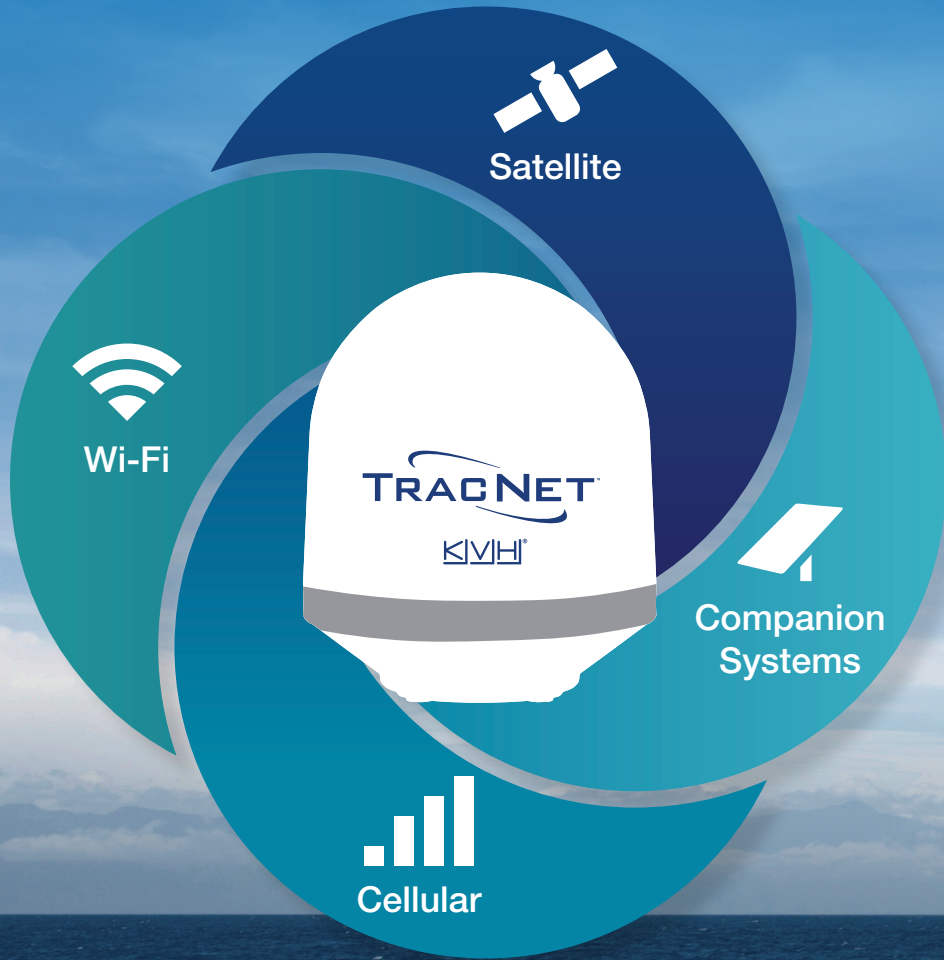


KMVH®



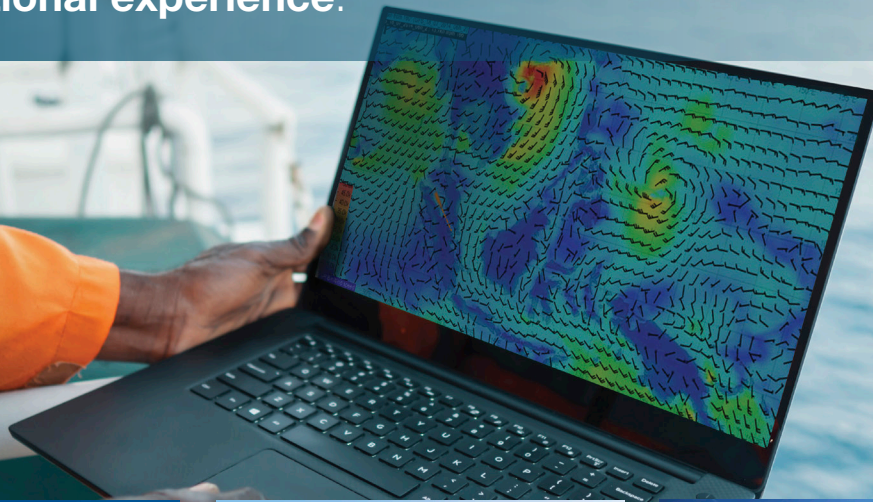
ONE

Intelligent hybrid connectivity

TRACNET™ H30 / H60 / H90

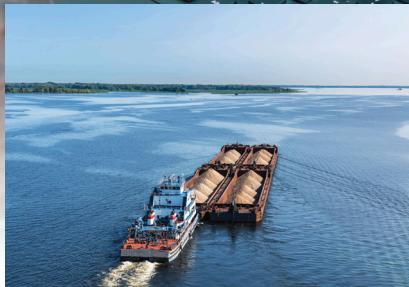
Commercial Maritime

One unified network. One smart terminal.
One exceptional experience.



Wi-Fi

At the dock:
Automatically switches to port Wi-Fi



Cellular

Underway:
Conveniently connects to cellular



Satellite

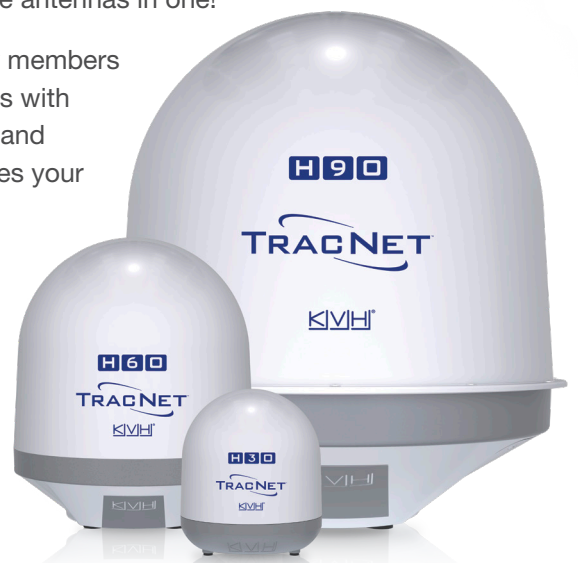
Offshore:
Seamlessly switches to VSAT

Don't think about how to connect, just feel confident that captains and crew can connect to whatever they need at any time.

Enjoy the fastest, most reliable connectivity at sea and in port with the KVH ONE® hybrid network and groundbreaking TracNet terminals. Each system includes integrated satellite, cellular, and Wi-Fi technology with intelligent, automatic network switching that will keep you connected to the best communication option at all times, in all sea states, and at any speed. It's like having three antennas in one!

Captains can share proprietary files with the office on shore. Crew members can stream their favorite movies, and enjoy crystal-clear voice calls with family. Everyone on board can enjoy entertainment, news, sports, and social media. KVH ONE and TracNet delivers connectivity that takes your business to the next level with:

- ✓ KVH's global Ku-band satellite network
- ✓ 5G/LTE cellular service in 150+ countries¹
- ✓ Compatibility with shore-based Wi-Fi
- ✓ Intelligent, automatic network switching based on service availability, costs, and the quality of data transfer
- ✓ Optional manual switching and use of user-supplied SIMs
- ✓ Flexible month-to-month contract terms with unlimited plan changes and suspensions






¹Where available and compatible with the KVH- or user-supplied SIM cards and service



Access complete product specifications, airtime rates, coverage maps, and more at kvh.com/one

KVH Connectivity Solution Comparison

Versatile and affordable connectivity options, from a VSAT-only solution to hybrid terminals with integrated VSAT, cellular, and Wi-Fi.

	TracPhone V30	TracNet H30 <i>NEW</i>	TracNet H60 <i>NEW</i>	TracNet H90 <i>NEW</i>
Automatic hybrid switching	N/A	☑		
Connectivity options	VSAT	Hybrid (VSAT, Cellular, Wi-Fi)		
Antenna diameter/weight	37 cm (14.6") 10.6 kg (23.4 lbs)	37 cm (14.6") 11.2 kg (24.6 lbs)	60 cm (23.6") 24.3 kg (53.6 lbs)	1 m (39.4") 86 kg (189 lbs)
BDU (belowdeck unit)	VSAT Hub (DC)	TracNet Hub (DC) or TracNet Hub+ (AC)		TracNet Hub+ (AC)
Max VSAT speed Mbps ² (down/up)	6/2 Mbps	6/2 Mbps	10/3 Mbps	20/3 Mbps
Satellite channels	Single (High-speed)		Dual (High-speed & Unlimited Use)	
Stabilization	Two axis, stabilized skew		Three axis, stabilized skew	
Supports user-supplied SIM card	N/A	☑		
Easy installation	Single cable install with DC power (AC-DC converter available)	Single cable install with DC and AC power belowdeck units (TracNet H90 available with AC power only)		
High-performance tracking	Digital IMUs and commercial-grade rotary joint for uninterrupted reception			
Service & support	From system selection and design to installation, and support in commercial ports worldwide, KVH OneCare™ provides peace of mind for the life of your product			
Available as AgilePlans® subscription	AgilePlans Regional	AgilePlans ONE		
Cybersecurity	Integrated terminal and network security	Integrated terminal and network security; optional enterprise-level upgrade		
KVH Link-compatible	N/A		☑	
Cloud-based email upgrade	N/A	☑		
Detailed technical specifications	 kvh.com/v30specs	 kvh.com/h30specs	 kvh.com/h60specs	 kvh.com/h90specs

²Data rates are Ku-band service speeds only and rate plan maximums and may vary in different regions and under different conditions.

Belowdeck Units

KVH's streamlined belowdeck units are at the heart of every TracNet terminal. These tools create confidence through all-in-one system control and network management.



TracNet Hub 12V DC-powered with built-in Wi-Fi router, ethernet ports and VoIP line. Shelf or bulkhead-mount.



TracNet Hub+ AC-powered with touchscreen interface, dual user-supplied SIM slots, built-in Wi-Fi router, ethernet ports, storage for KVH Link content and two VoIP lines. Rack-mount.

Hybrid Connectivity Without Complication

KVH Manager delivers a powerful suite of mobile-responsive tools that provides valuable analytics, data usage control, and customizable interfaces. Monitor your usage in real time; choose to allow, restrict or block data usage in eleven different categories; and set up alerts to stay aware of your data usage.

Always visible indicator for active and available hybrid networks

Hybrid wide area network detail views

Easily toggle between automatic and manual network switching

Automatic network switching selects based on service availability, costs, and the quality of data transfer

Suite of flexible network and vessel management tools

Powerful tools to customize and manage your TracNet terminal and onboard network configuration

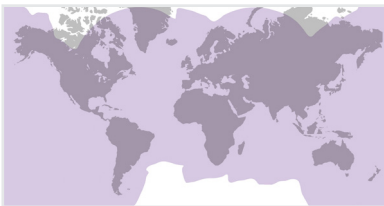
Mobile-responsive view of all screens, including real-time data usage

TracNet terminals have integrated IoT proactive monitoring functionality that reports daily on 150+ vital health and performance parameters to optimize your system for the most reliable and effective experience

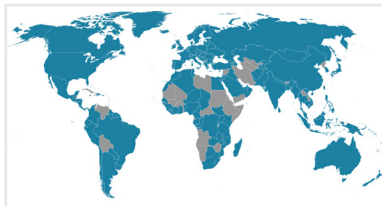
Enjoy comprehensive support for the life of your product with KVH OneCare support and service in commercial ports worldwide

KVH ONE Hybrid Network Coverage*

View up-to-date and terminal-specific coverage maps at kvh.com/tracnetmaps



Global HTS Coverage



Cellular Coverage

- ✓ Global HTS Ku-band satellite network, with 294 million sq km (113 million sq miles) of coverage, powered by Intelsat
- ✓ Cellular support in 150+ countries as far as 32+ km (20+ miles) offshore
- ✓ Compatible with shore-based Wi-Fi networks

*Actual coverage and availability may vary. Data rates may also vary in different regions. KVH provides no guarantees of coverage or availability. For the most up-to-date coverage maps, visit kvh.com/tracnetmaps.

kvh.com/one



World Headquarters
KVH Industries, Inc. · Middletown, RI U.S.A.
+1.401.847.3327 · info@kvh.com

EMEA Headquarters
KVH Industries A/S · Birkerød, Denmark
+45.45.160.180 · info@emea.kvh.com

Asia-Pacific Headquarters
KVH Industries Pte Ltd. · Singapore
+65.6513.0290 · info@apac.kvh.com