



Flow: 24/7/365 Machine-to-Machine Data Transfer

Superior Connectivity Unlocks the Real-time Benefits of IoT at Sea

Your organization supports the uninterrupted operation of shipborne machinery. How can your engineers monitor remote systems, optimize performance, collect troubleshooting data, and minimize in-port service calls?

Subscribe to KVH Watch, the IoT Connectivity as a Service solution, and rely on Flow, secure machine-to-cloud connectivity for remote monitoring of your onboard equipment. Enjoy the benefits of a dedicated IoT connection, enabling you to define the SLA for your service offering, fix the costs of data transmission, and enjoy real-time information to make actionable decisions.

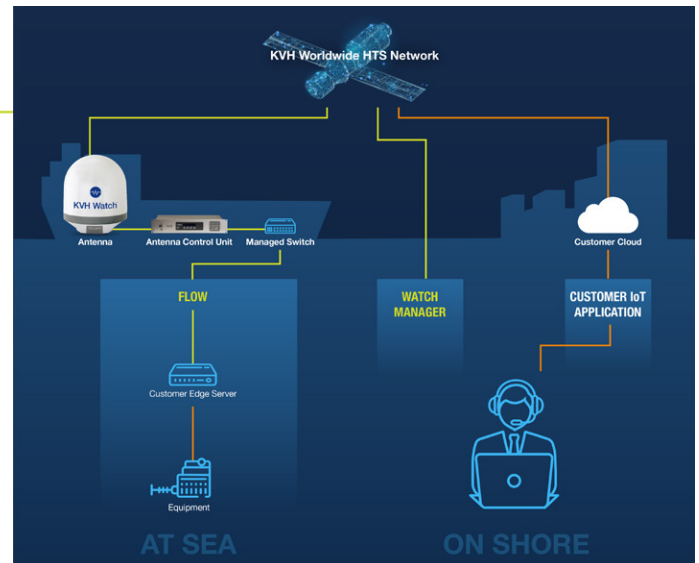
Pricing is a fixed monthly subscription fee based upon your anticipated monthly data usage via Flow.

Flow offers data connections with packages tailored to cover your total monthly requirements:

- 24/7/365 machine-to-machine data delivery that uses dedicated ship-to-shore bandwidth
- Data delivery from your edge server to your cloud data store and IoT applications via VPN

Flow supports applications with...

- Data acquisition units that connect to machinery output ports and parse native protocols such as Modbus and NMEA 0183
- An edge server that stores the data for forwarding as files or messages over the KVH spacelink to shore, capable of caching the data when the Watch Terminal is temporarily offline for any reason
- A shore-based data storage server acting as the endpoint for the data transmissions
- An IPsec or OpenVPN[®] VPN for security (not required, but strongly recommended)



Flow Intervention

Schedule a Flow Intervention for a temporary burst in the maximum data rate available to you, as fast as 10/3 Mbps (down/up), to transfer large files between ship and shore in either direction:

- Quickly deploy a software update or patch to onboard systems
- Pull a large diagnostics file from the edge server to shore for inspection
- Boost data delivery rate for a more detailed view
- Temporarily increase the data delivery rate to monitor more data channels
- Gain direct access to the edge server and the machinery connected to it, depending on the IoT platform's capabilities and configuration

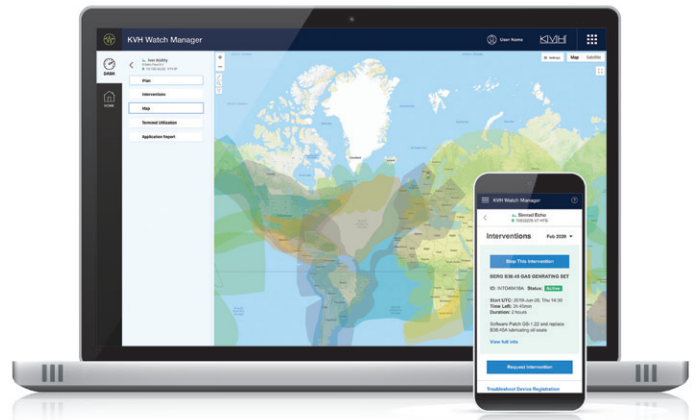
Interventions can be requested by any user via Watch Manager, but must be authorized by the ship's Master.



Outstanding Visibility & Control with Watch Manager

Designed primarily for onshore use by support engineers, the Watch Manager web application provides visibility to everything your customer support team needs to know:

- Vessel location and track on a global map
- Watch Terminal connectivity status
- Flow data rate, daily and month-to-date usage
- Intervention scheduler and session log

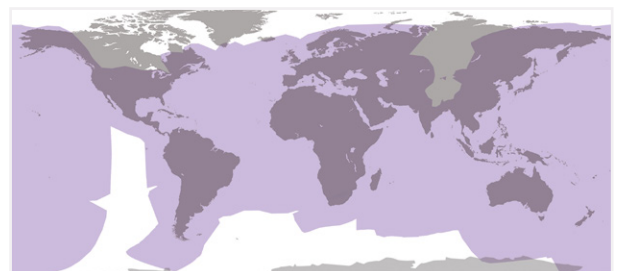


Rugged, Proven Connectivity with Watch Terminal

The commercial-grade KVH Watch Terminal supports all KVH Watch tenants using a dedicated high-throughput VSAT antenna with its own dedicated LAN that is fully isolated from the vessel's existing IT and OT networks. In addition, it includes a 2U rack-mountable Antenna Control Unit (ACU), 1U managed switch, and dedicated Wi-Fi access points for the exclusive use of Remote Expert Interventions.

Global IoT Connectivity

KVH Watch delivers on the promise of IoT at sea, overcoming the geographic limits of cellular service and the slow speeds and high cost of L-band services. Your vital IoT data, along with the ability to provide live remote support, are now affordably accessible worldwide, thanks to the Watch Terminal and KVH's global HTS network, a layered network with industry-leading global speeds and superior reliability.



KVH's global Ku-band HTS network offers 272 million sq. km (105 million sq. miles) of coverage with data speeds as fast as 10/3 Mbps (down/up).

kvh.com/watch



World Headquarters

KVH Industries, Inc. · Middletown, RI U.S.A.
+1.401.847.3327 · info@kvh.com

EMEA Headquarters

KVH Industries A/S · Kokkedal, Denmark
+45.45.160.180 · info@emea.kvh.com

Asia-Pacific Headquarters

KVH Industries Pte Ltd. · Singapore
+65.6513.0290 · info@apac.kvh.com