



STARLINK

KVH is a Starlink Authorized Tier 1 Reseller

KVH SERVICE PLANS

Starlink Local Priority Service

Available with any Starlink Antenna

Considering Starlink for your connectivity?

Choose KVH and enjoy Starlink’s speed and affordability, KVH’s 24/7/365 live global service and support*, a robust management app, concierge-level customer service, enhanced control, and the benefits of KVH’s advanced, integrated services for security, connectivity, and versatility.

KVH offers packages tailored to your needs and budget, ensuring the best performance for your Starlink Local Priority service, which is **ideal for fixed and mobile businesses on land and inland waterways, including lakes and rivers.**

Select Your Local Priority Starlink Service Plan

Monthly Service Plans	\$/month (USD)	Monthly Allowance	Data Blocks and Top-Ups
Starlink 50 GB Local Priority	Contact KVH Sales for Pricing	50 GB	Contact KVH Sales for Pricing
Starlink 500 GB Local Priority		500 GB	
Starlink 1 TB Local Priority		1 TB	
Starlink 2 TB Local Priority		2 TB	

Service requires a one-time Activation Fee

All pricing is in USD for local Priority Service in the United States (pricing varies by country)

Select a KVH Starlink Local Priority OneCare® Plan

KVH Starlink subscribers are required to select a OneCare Global Service and Support Package with their data service plan

Benefits	Essential Contact Sales for Pricing	Standard Contact Sales for Pricing	Premier Contact Sales for Pricing
Standard US Business Hours Technical Support	X	X	X
Benefits Extend to your CommBox™ Edge		X	X
24x7/365 Tier 1 Technical Support		X	X
Third-party Warranty Administration	X	X	X
Access to KVH’s Unit In Advance Program**	X	X	X
VIP Prioritized Technical Support & Airtime Services Phone Queue			X
Tech Support Email and Case Prioritization			X
Airtime Services Email and Case Prioritization			X
Extended Warranty (parts)			X
Two-way Economy Air Freight			X

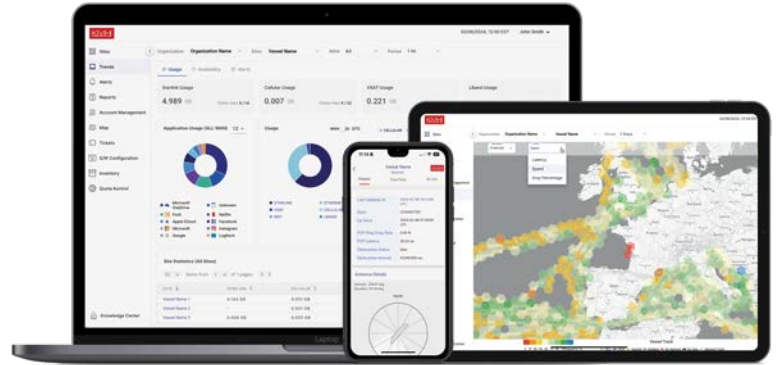
* 24/7/ 365 live technical support and global field service only available with the Priority Standard and Priority Premier OneCare plans No OneCare or Service Plan charges are incurred during pause periods.

** KVH standard terms and conditions apply

Starlink Local Priority Service

Other Benefits of Activating Your Starlink Service with KVH:

- Monthly service is billed in arrears
- A complete Starlink Solution with kits, mounts and accessories in stock for same-day shipping
- Monthly billing starts when you choose to activate, not when your Starlink kit ships
- KVH subscribers have access to **KVH Manager**, a powerful, secure suite of tools designed to help you take full control of your connectivity. The intuitive platform offers advanced features such as data usage reporting, text and email alerts for usage, opt-in or opt-out of Top-Ups, billing and terminal information, daily billed usage, network status, position, telemetry and real-time tracking, to enhance operational efficiency.



Consider Expanding Your Starlink Capabilities with:

KVH Value-added Services

Ask us about our great value-added services to take full advantage of your Starlink system, including:

- Sign up for a public IP for enhanced networking.
- Get crystal-clear voice calling when you add a KVH multimedia terminal adapter (MTA) (KVH p/n 19-1191) and as many as two VoIP lines. Plus, you can also add as many as ten virtual local numbers (five per line).

KVH CommBox™ Edge Communications Gateway

Take control of your Starlink with KVH's CommBox Edge Communications Gateway, the most powerful network and bandwidth management solution available.

Visit kvh.com/edge for more information on this popular optional accessory.



Contact sales@kvh.com for Pricing

General Terms

- All prices are in \$USD and do not include any taxes or fees that may apply.
- All services and plans are subject to the KVH Master Services Agreement.
- No annual contract for purchased equipment; rate plans are month-to-month, automatically renewing on a monthly basis. For leased terminal equipment, the contract term must be concurrent with, and extend to, the end of the lease period.
- For complete details on plan changes, see "Airtime Rate Plan Change/Suspension Policies" at kvh.com/airtimeresources.
- First voice line with a KVH-assigned phone number is \$49/month; the second \$39/month. User-specified voice line phone numbers are \$70/month. Voice calling requires a KVH MTA.
- Virtual local phone numbers can be added for a monthly fee of \$39 per number (5 max. per voice line) where available/subject to in-country regulations.
- Both incoming and outgoing calls are charged at \$0.68/minute. A few select countries and satellite phone services are blocked. Contact KVH Airtime Services for special rates for these areas and services.

kvh.com/starlink

Visit kvh.com/offices for regional headquarters and sales locations and contact details.

